

aurender

REFERENCE MUSIC SYSTEMS



S10 Digital Music Player

User Guide

New features and improvements are continually developed and implemented through upgrades via the Internet. The online version of the User Guide with details of the latest upgrades can be found at

www.aurender.com

TVlogic Always ON-AIR

12 Fl. Ace High-End Tower 8, 84 Gasan Digital 1-ro, Geumchoen-gu, Seoul 153-797, Korea

Tel: +82-8668-7516 Fax: +82 31 728 8537

Table of Contents

	Page
Instructions	3
Box Contents	3
Positioning	3
Front Panel	4
Rear Panel	4
Quick Start	5
1. Connections	5
2. iPad* App Installation and Set Up	6
3. Selecting the Aurender Music Server	6
4. Enter Passcode	6
5. Manually Checking for Upgrades	6
6. Setting Time and Language to iPad settings	7
7. Scan all files using the Scanner menu.	7
8. Copying Files to the Aurender	8
Aurender iPad* Application Features	9
Technical Specifications	10

Warranty

The warranty period for Aurender Reference Music Players is two years including parts and labor. The warranty is non-transferable and excludes damage due to (i) normal wear and tear, (ii) abuse, misuse, or neglect, (iii) repair, attempted repair, or any modifications by anyone not authorized by TVLogic or its distributors. After inspection, TVLogic will at its discretion repair, adjust or replace the product free of charge. Users are responsible for shipping the products to TVLogic or an authorized service center, and TVLogic will pay for return shipping provided the repair is under warranty. For any technical support issues, please email support@aurender.com

Other Needed Equipment

An iPad, a wireless router for the iPad, a digital-analog converter or amplifier with digital inputs, and digital cables are needed in order to conveniently use Aurender Reference Music Servers/

The iPad is the user interface for Aurender Reference Music Players and a wireless router to communicate with the iPad. An Internet connection is strongly recommended in order to receive free software upgrades and for remote service support in case any emergencies should arise. The digital output of the Aurender should be connected to a digital-to-analog converter or to the digital audio input of an amplifier. Proper digital cables should always be used when making digital connections (AES/EBU, Coaxial, BNC, Optical, USB, LAN). For the most convenience in transferring files, connect a PC or Mac to the Aurender, preferably via a router to the Ethernet port (LAN) provided on the rear panel.



Instructions

Read the instructions carefully before setting up the Aurender Music Player.

1. Be careful not to drop the device to avoid internal damage.
2. Do not disassemble the device.
3. Keep magnetic materials away from the Aurender Music Player to prevent data damage.
4. Do not expose device to oil, dust, water, high humidity, or smoke.
5. Keep ventilation openings free from obstruction.
6. When cleaning, use only a soft cloth. Keep out of contact with water or other liquids.
7. All servicing must be performed by a qualified technician, or the warranty will be voided.
8. Unplug power cord during severe lightning or when unused for a long period of time.
9. Unplug the device from the outlet only after completely turning off the unit.
10. Always turn the power off before connecting or disconnecting any cables.

Please note that hard drives can break down. It is important to back up your music collection periodically to a separate memory device. In the event of drive failure, TVLogic is not responsible for any loss of data. Drive manufacturers will only replace faulty drives under warranty and do not compensate to any loss of data.

Warning - Before connecting audio cables, first check to see that all devices are grounded using grounded plugs and sockets. All devices should be turned off, before connecting any audio or digital cables.

Box Contents



Aurender Music Player

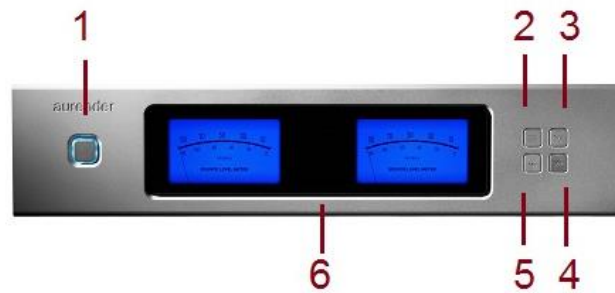


AC Power Cord

Positioning

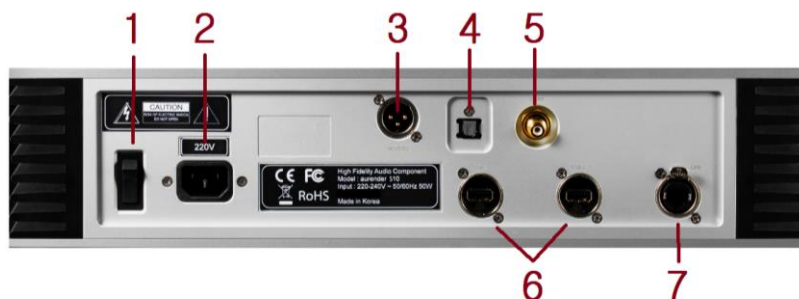
1. Place on a flat, horizontal and stable surface.
2. Keep away from heat sources, such as radiators.
3. Do not stack other products on top..
4. Allow space around the device for ventilation.
5. Do not place inside an enclosed cabinet.

Front Panel



1. **On/Off** – In default mode, the power button will turn the Aurender on and off completely. The button light will stop blinking when fully turned on or off. In standby mode, the Aurender will go into standby (sleep) mode and turn on instantly. To switch to Standby mode, go to the Server tab in Settings of the iPad application. Scroll down to the bottom and turn on the “Use Standby” button.
2. **Display Menu** - Press to cycle through 4 display options: Song Information, Blue Level Meter, Brown Level Meter, and Playlist Menu. During power on and off, “Aurender” and the model number “S10” will be displayed.
3. **Play/Pause** - Press to start or stop playback for songs in Queue.
4. **Play Next** - Press to skip to the next track for songs in Queue.
5. **Play Previous** - Press to skip to the previous track for songs in Queue.

Rear Panel



1. **AC Power Switch** - Press top to turn on AC power. Press bottom to turn off.
2. **AC Power Socket** - To connect the AC power cord to a power source/outlet.
3. **AES/EBU XLR (SPDIF) Output** - To connect to a XLR input of digital-to-analog converters.
4. **Optical (SPDIF) Output** - To connect to an optical input of digital-to-analog converters.
5. **Coaxial RCA (SPDIF) Output** - To connect to a coaxial input of digital-to-analog converters.
1. **USB 2.0 Data Ports** - Use any of the two USB ports for USB digital audio output. Both the USB output and SPDIF outputs will output signals and can be used at the same time. Both ports can also be used to copy files from USB memory devices or to connect external CD-ROM drives for automatic conversion of CDs to FLAC format.
6. **Gigabit Ethernet port** - To connect to networks and Network Attached Storage (NAS) devices.

Quick Start

1. Connections

Connect the AC power cord to the AC socket on the rear panel (2) and power main using grounded sockets and plugs. Do not turn on the power.

Use an Ethernet cable to connect the Ethernet port on the rear panel (7) to the router. The router should be connected to the Internet and computer, in order to receive updates and conveniently transfer files.

Select one of the digital outputs (AES/EBU, optical, coaxial, USB) on the rear panel (3, 4, 5, 6) and connect it to a DA converter or an amplifier with a digital input.

To connect dCS Vivaldi systems, please refer to the diagrams below.

dCS Vivaldi System (USB)



dCS Vivaldi DAC + Upsampler (AES/EBU)



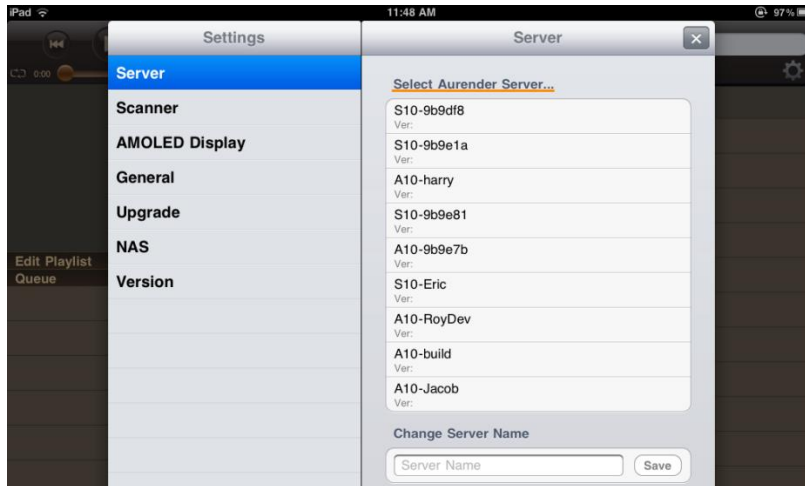
* dCS is a trademark of Data Conversion Systems, Ltd.

2. iPad Application Installation and Set Up

Using the iPad, go to the App Store and type Aurender in the search window. Install the Aurender iPad application. The Aurender supports WAV, FLAC, Apple Lossless (ALAC) , AIFF, APE and other major formats.

3. Selecting the Aurender Music Server

Open the Aurender application and the Aurender Music Server will be shown on the **Server** menu. The Aurender Music Server must be turned on and connected to the iPad via a wireless router.



Select the Aurender Music Server by tapping its name. If no server is listed, tap Add Server at the bottom of the window and a window will appear asking for the IP address. The IP address can be found by pressing the Display Mode button on the front panel (top left) and keeping it depressed until the front display changes. Release the button. Find the IP address and enter. To return the display to the normal mode, press the Display Mode button again.

4. Enter Passcode



When the Aurender Music Server is first turned on, a Passcode needs to be entered onto the iPad App. Please enter the Passcode shown on the Aurender front display.

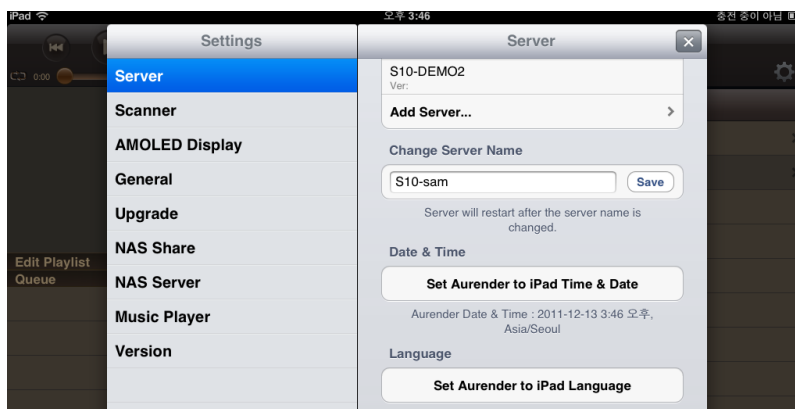
5. Manually Checking for Upgrades



Go to Upgrade tab and check for the newest version of the music server system software and upgrade to the newest version, if needed. After upgrading, the Aurender will reboot automatically. At this time, the iPad application needs to be closed and restarted in order to be upgraded also

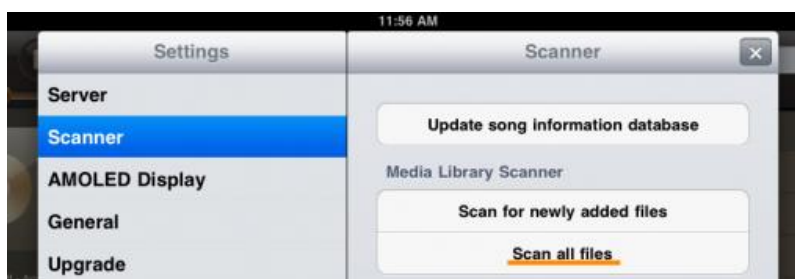
6. Setting Time and Language to iPad settings

Time and Language can be set by using the menu at the bottom of the **Server** tab.



Aurender's time and language should be set to the iPad time and language settings.

7. Scan all files using the Scanner menu.



Scanning will continue in the background, even when songs are selected and played. Please note that it can take hours to scan large libraries. After scanning is done, a pop up window will appear stating that the database is being downloaded. If the download fails to finish or gets stuck, please move closer to the wireless router and press Update song database. The time to download the database varies according to song database size and wireless connection speed between the wireless router and the iPad. It can be a few seconds or a few minutes.

Note: When new files are added, the Aurender needs to scan the HDD and make a new database. When the song database is updated after scanning, the iPad needs to download the database in order for the newly added songs to appear on the Aurender iPad App.

8. Copying Files to the Aurender

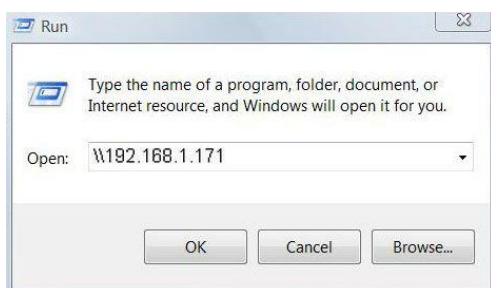
There are two ways to copy files to the Aurender's HDD.

1. Use the Ethernet connection to copy files to the Aurender using a PC or Mac.
2. Connect a USB memory to the USB port on the rear panel.

Note: After song files are copied to Aurender, new songs will appear, only after the files are scanned and the song database transferred to the iPad application. Files will be scanned automatically one minute after additions or changes to the files.

PC Users

1. Press the Windows icon + R on your keyboard (START -> RUN). The following menu will pop up.

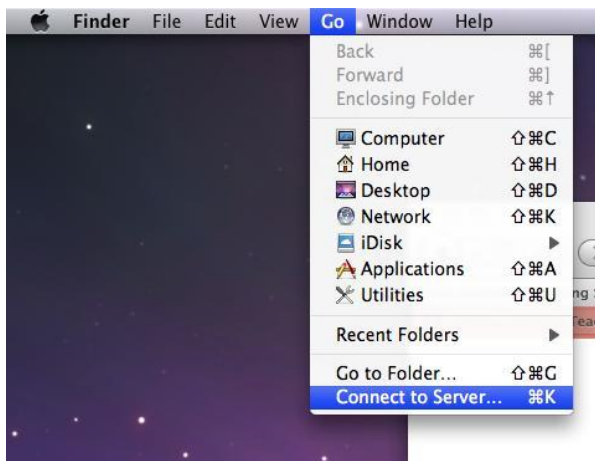


2. Type in two back slashes (\) and the IP address of the Aurender. (For example: \\192.168.1.171). The Aurender IP address can be found in NAS under SETTINGS on the iPad application.
3. Click OK and a window will appear with folders labeled 'hdd1' and 'hdd2'. Click on a folder.
4. A popup window will ask for a Username and Password. They can be found in NAS under SETTINGS in the iPad application.
5. Drag and drop files in to hdd1 or in its sub-folders.
6. Sub-folders may be created, renamed, or deleted. To add a sub-folder, right click on the white space and go to New -> Folder.

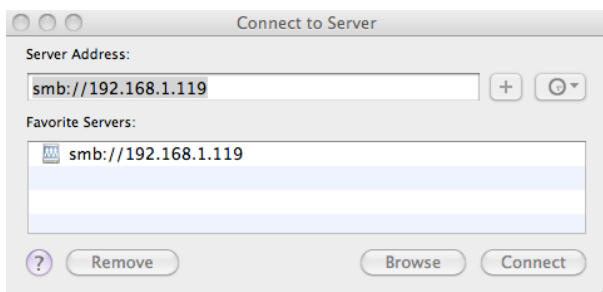
Note: Importing large libraries can take a very long time Importing files in batches is advised.

Mac Users

1. Locate the Finder menu bar at the top of your desktop.
2. Click GO -> CONNECT TO SERVER from the navigation bar.



3. Type in 'smb://' followed by your Aurender's IP address. (For example: smb://192.168.1.171) The IP address can be found under Conductor SETTINGS -> NAS.



4. Click Connect and a window will appear with folders labeled 'hdd1' and 'hdd2'. Open a folder.
5. A popup window will ask for a Username and Password. They can be found in the iPad application under SETTINGS -> NAS.

Note: If the Aurender is connected through a Gigabit network, the transfer speed will be roughly 50MB/sec. It could take 5-6 hours to copy 1TB of files. We recommend copying files in batches. The Aurender is able to play back music and copy files simultaneously

Copying from USB Memory Devices

Insert a USB memory device already loaded with songs into USB port on the rear panel. The front display will show 'USB Copying'. When all files have been copied, the display will blink 'USB Copying Done'. If the folder names are the same as the categories in the Aurender second row (All, Classic, Jazz, Pop, Local), then the files will go into the respective folders. If the folder names are not the same, then the files will go into Etc.

Aurender iPad App







1. **Browser Buttons** - The top row buttons categorize songs according to the metadata of the the song file. Tap Song, Artist, Album, Genre, Composer, or Conductor to browse through songs according to the file meta tags. Tap the Folder button to browse by folders. Excluding the “All” and “Misc” buttons, five of the second row buttons have the same names as up to five folders on one of the internal hard drive. The folder names may be changed by the user by changing the folder name and enclosing it with square brackets - [foldername].
2. **Smart Search Window** – Type in artists, albums, genres, composers, conductors or file names and the search results will appear as you type. To search numbers, an asterix(*) or a question mark(?) needs to be added after the number you are searching for in order to get a valid search result.
3. **Settings Icon** - Press to open Settings menu
4. **Quick Scroll Bar** - For faster navigation, tap a number or letter to jump to content starting with that number or letter.
5. **Contents Window** - Scroll through content by flicking up or down. For faster navigation, use the quick scroll bar on the right hand side. Just tap and scroll to jump to content starting with that number or letter.
6. **Queue Window** - Press any song in the contents window to add it to the queue. If you want to play a song immediately, add it to a playlist, or find similar songs, long press the song in the contents window and pop-up menu with these options will appear. Expand the Queue window by flicking the contents window to the right. There will be a Consume button on the bottom. Consume On will delete songs from the queue as they are played. To clear all songs from the queue except for the currently playing song, long press the CLEAR button on the bottom and a “Clear all except for currently playing song” will appear.
7. **Edit Playlist Window** – Press the Edit Playlist bar to expand. To edit playlists, press the blue arrow next to the playlist name.
8. **Song Information Window** – To expand, flick the contents window to the right.

Playback Functions

Queue –To add **songs to the queue**, tap a song in the Contents Window and it will be added to the queue. The selected song will be marked with a small arrow. Subsequently selected songs will be added to the end of the queue. For the full queue view, flick the Contents window to the right. This will also reveal an Edit button. To return the Song Contents window to original size, flick the screen to the left.

Instant Play - To instantly play a song, tap on the left hand margin of the song you want to play. An arrow will appear next to the song title. The selected song will appear below the song that was last played.

Deleting songs from queue - Lightly flick the song title to the left or right, then  tap

Clearing the queue - Tap  at the bottom of the queue. All songs will be deleted except for the song that is currently playing. To completely empty the queue, pause the current song, then tap  once or tap  twice.

Editing the queue - Swipe the contents-view pane to the right for the full queue view and tap edit. To rearrange the order of play, locate the 3 horizontal stripes to the right of the song title. Touch and hold the stripes and drag up or down.

Playback Controls



Other playback options - For more options, touch and hold the title of a song in the Contents window and a blue pop-up screen will appear with Play Now, Add to Next, Replace Queue and Add to End menus.

Play Now- Selected songs are added to the queue to be played right now.


Add to Next – Selected songs are added to the queue to be played after the current song

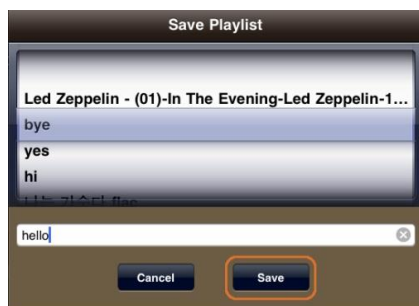
Replace Queue – Clears current queue and replaces queue with selected songs

Add to End – Selected songs are added to the end of the queue.


The touch and hold function also works for specific artist, album, genre, composer, conductor, index bar, or even categories. 500 is the maximum number of songs possible in a queue or playlist. Only the first 500 songs will be added, if the selection contains more than 500 songs.

Saving Playlists



Once you have added one or more songs to the queue, tap  at the bottom of the queue window. Type in the playlist and. then tap the “save” button.



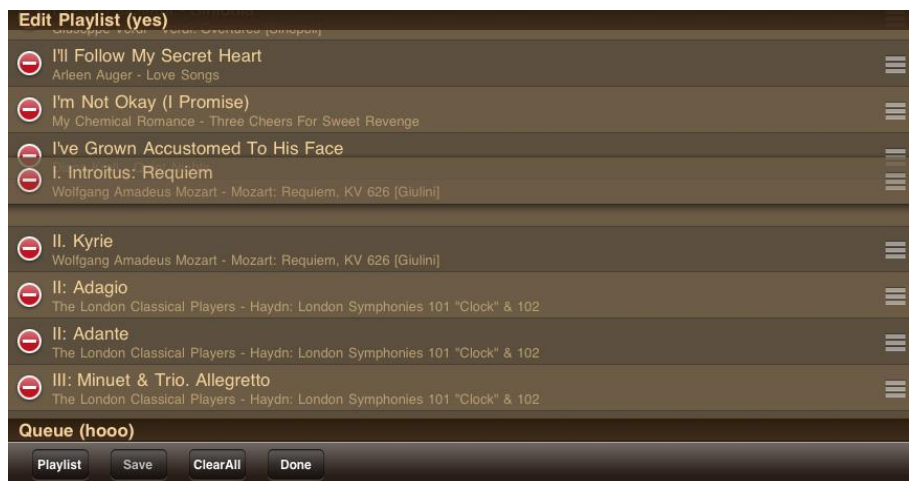
Viewing Playlists

To see playlists, tap  on the bottom of the screen. Tap a playlist and the songs will appear in the queue and start playing.

Editing Playlists

Tap  at the bottom of the screen. Then, tap  next to the title of the playlist you wish to edit. A Playlist window will open. When the Edit Playlist window is open, songs selected from the Contents window will be added to the Edit Playlist window, not the queue window, so that adding, rearranging, or deleting of songs in the playlist can be done without interrupting playback of the current queue. In the Edit Playlist window, playlists can be rearranged, deleted or added to. To rearrange songs:

From your playlist, tap . Touch and hold  next to the title of the song, then drag and drop.



Deleting Songs - Flick the song title to the left or right, then tap “Delete”

Saving Changes - Save changes by tapping “Save” at the bottom of the queue

Renaming Playlists - To rename a playlist, type in a new name and tap “Save”

Expanding Queue Window - Tap the Queue bar to expand the Queue window

Opening Playlist Window - Tap the Edit Playlist bar twice to expand the Edit Playlist window

Deleting Playlists - To delete a playlist, tap “Playlist” at the bottom of the queue, flick the playlist name to the left or right and then tap “Delete”

Album Cover View

To see a close-up of album covers, tap the album icon just below the playback controls. Covers are usually downloaded from an online database by your CD ripping software. Users may also scan front and back covers and see them on the iPad application. Flick right or left to view the front and back covers.


Adding Scanned Album Photos

Scan CD album cover artwork (1600×1600 is recommended) and name the files “front.jpg” for the front cover and “back.jpg” for the back cover image. Copy these two files to the folder where the album songs are located. Aurender searches for album covers in three ways. First, it searches for the front.jpg file. If there is none, then it searches for the folder.jpg file. If there is none, then it will search for the album cover according to the song meta-tag information.

Album Cover View Functions

Tap in the Album Cover to see viewing options.

Album Track List and Queue

To view the track list, tap  on the lower right part of the screen. Songs selected from here will be sent to the end of the queue.

Toggle between the track list and queue by tapping  on the bottom of the screen. Please note that Queue cannot be edited while in cover view.

Return to Cover Art

To go back to cover art, tap the album icon located at the bottom right of the screen.

Exit Album Cover View

To exit and go back to the Contents window, tap the arrow located on the bottom left of the screen.

Technical Specifications

	S10 Music Player
User Interface	Aurender iPad* App
Compatible Formats	DSD (DSF, DFF), WAV, FLAC, AIFF, ALAC, M4A, APE and others
Solid-State Drive	1 x 64GB
Hard Disk Drives	1 x 2TB
SPDIF Clocking	FPGA-based All Digital Phase Locked Loop
Audio Clock	OCXO
Digital Audio Outputs	1 x Coaxial, 1 x Optical, 1 x AES/EBU, 2 x USB Audio Class 2.0
Digital I/O	1 x Gigabit Ethernet Port, 2 x USB 2.0 Ports
Audio Power Supply	Linear Power Supply
CPU Power Supply	Fanless 50W Switching Mode Power Supply
CPU Board	Mini-ITX
Main Memory	2GB
HDD Isolation	Rubber damping and shielding with aluminum partitions
Finish	Silver or Black
Dimensions	430mm x 96mm x 353mm
Weight	14kgs.

Specifications are subject to change without notice

*iPad and Apple are trademarks of Apple Inc.

For more information, please visit our website at

www.aurender.com